



# Regional Domiciliary Care Tender 2017

## Wellbeing Impact Assessment Report

This report summarises the likely impact of a proposal on the social, economic, environmental and cultural well-being of Denbighshire, Wales and the world.

Assessment Number:	126
Brief description:	A dynamic framework tender for domiciliary care services led by Denbighshire on behalf of Ynys Mon, Gwynedd, Conwy, Flintshire, Wrexham Councils and Betsi Cadwaladr University Health Board (North Wales Social Care & Wellbeing Services Improvement Collaborative)
Date Completed:	09/12/2016 16:40:34 Version: 1
Completed by:	Maria Bell
Responsible Service:	Community Support Services
Localities affected by the proposal:	Whole County,

## IMPACT ASSESSMENT SUMMARY AND CONCLUSION

Before we look in detail at the contribution and impact of the proposal, it is important to consider how the proposal is applying the sustainable development principle. This means that we must act "in a manner which seeks to ensure that the needs of the present are met without compromising the ability of future generations to meet their own needs."

### Score for the sustainability of the approach

Could some small changes in your thinking produce a better result?

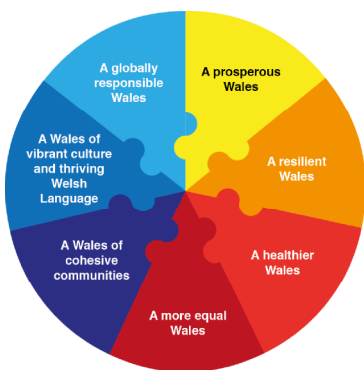


(3 out of 4 stars)

Actual score : 21 / 24.

### Summary of impact

#### Wellbeing Goals



A prosperous Denbighshire

Positive

A resilient Denbighshire

Positive

A healthier Denbighshire

Positive

A more equal Denbighshire

Positive

A Denbighshire of cohesive communities

Positive

A Denbighshire of vibrant culture and thriving Welsh language

Positive

A globally responsible Denbighshire

### Main conclusions

Overall, this project (tender) is expected to deliver a positive impact on the wellbeing of North Wales citizens, in particular - the people receiving care & support at home ('service users') - the workforce delivering the care & support, As this contract (agreement) is only for 6 years (4 + 2 years) it is not possible to quantify the benefits to 2050 This project takes into account the Population Needs Assessment undertaken as a requirement of the Social Services & Wellbeing (Wales) Act 2014. The project has taken account (where possible) of: - the Regulation & Inspection of Social care (Wales) Act 2016 and its planned implementation during the life of this agreement - The national review of domiciliary care in Wales (by the Care & Social Services Inspectorate for Wales) - Above & Beyond 2016.

## THE LIKELY IMPACT ON DENBIGHSHIRE, WALES AND THE WORLD

### **A prosperous Denbighshire**

Overall Impact	Positive
Justification for impact	The selection criteria for domiciliary care agencies to be offered an agreement (contract) for delivery is based on most economically advantageous criteria - related to social value / impact, quality and cost of delivery.

### **Positive consequences identified:**

We are aiming to reduce unnecessary travel as a result of current commissioning practice.

Our project aims to ensure financially sustainable provision of this essential front line services (care and support for people in their own home).

Our project is seeking to improve workforce terms and conditions, reduce staff turnover and deliver more continuity of care for the people supported. We are asking potential suppliers to demonstrate how they will offer additional social value, collaborating with others to provide more jobs and support people who are NEET or claiming welfare benefits to obtain work in the social care sector. We have worked with the North Wales Economic Ambitions Board to identify the Health & Social Care sector as a growth sector for future employment across North Wales.

Our project is seeking to improve workforce terms and conditions, reduce staff turnover and deliver more continuity of care for the people supported. The Regional Commissioning & Workforce Boards (Health & Social Care partners) will work with employers and colleges to develop skills and promote qualifications for Care & Support Workers.

The tender documents will include quality delivery requirements and key performance indicators.

Employers are invited to identify how they could offer additional social value / support to their workforce, including support with childcare

### **Unintended negative consequences identified:**

### **Mitigating actions:**

### **A resilient Denbighshire**

Overall Impact	Positive
Justification for impact	Partners are seeking to ensure most efficient travel / transport options in their procurement of domiciliary care; this will reduce unnecessary cost and maximise capacity when we are expecting unprecedented future demand (due to ageing profile of our communities) with reducing workforce availability.

**Positive consequences identified:**

Partners are seeking to ensure most efficient travel / transport options in their procurement of domiciliary care; this will reduce unnecessary cost and maximise capacity when we are expecting unprecedented future demand (due to ageing profile of our communities) with reducing workforce availability.

**Unintended negative consequences identified:****Mitigating actions:****A healthier Denbighshire**

Overall Impact	Positive
Justification for impact	The main focus of the care & support at home service is to promote and enhance (where possible) the wellbeing and independence of North Wales citizens by delivering 'what matters' to them and preventing where possible unnecessary admissions to care homes / hospitals.

**Positive consequences identified:**

The main focus of the care & support at home service is to promote and enhance (where possible) the wellbeing and independence of North Wales citizens; including physical and social aspects of wellbeing

The main focus of the care & support at home service is to promote and enhance (where possible) the wellbeing and independence of North Wales citizens including social and leisure aspects of wellbeing

The main focus of the care & support at home service is to promote and enhance (where possible) the wellbeing and independence of North Wales citizens; including emotional and mental aspects of wellbeing

This is a project which includes the commissioning of care & support at home to meet people's health care needs. Some of the services purchased under this project would be under the direction of a qualified and registered health practitioner, such as a nurse.

**Unintended negative consequences identified:****Mitigating actions:****A more equal Denbighshire**

Overall Impact	Positive
Justification for impact	The main focus of the care & support at home service is to promote and enhance (where possible) the wellbeing and independence of North Wales citizens.

**Positive consequences identified:**

Tenderers / providers will need to demonstrate their policy & practice in relation to the Equalities Act 2010 and the Welsh Language Standards of the commissioning partners; including how they will train their staff and ensure on-going compliance.

The main focus of the care & support art home service is to promote and enhance (where possible) the wellbeing and independence of North Wales citizens. Tenderers / providers will need to demonstrate their ability to assess when to provide information or refer / signpost citizens for additional Information Advice, Advocacy or Guidance.

Tenderers / providers will need to demonstrate their ability to assess when to provide information or refer / signpost citizens for additional Information Advice, Advocacy or Guidance.

#### **Unintended negative consequences identified:**

#### **Mitigating actions:**

#### **A Denbighshire of cohesive communities**

Overall Impact	Positive
Justification for impact	The main focus of the care & support art home service is to promote and enhance (where possible) the wellbeing and independence of North Wales citizens.

#### **Positive consequences identified:**

Tenderers / providers will need to demonstrate their experience & knowledge of safeguarding people at risk (adults / children at risk)

The main focus of the care & support art home service is to promote and enhance (where possible) the wellbeing and independence of North Wales citizens; including maintaining / developing social relationship and community participation of people they support

#### **Unintended negative consequences identified:**

#### **Mitigating actions:**

#### **A Denbighshire of vibrant culture and thriving Welsh language**

Overall Impact	Positive
Justification for impact	Tenderers / providers will need to demonstrate: - Their policy & practice in relation to the Welsh Language Standards of the commissioning partners - How they intend to meet the cultural and linguistic needs of the local populations/s (each County); the tender makes specific needs to understanding of the Welsh language, culture and heritage

#### **Positive consequences identified:**

Tenderers / providers will need to demonstrate their policy & practice in relation to the Welsh Language Standards of the commissioning partners; including providing initial and

annual information about their staff skills in welsh language and how they will provide training to promote the welsh language

Tenderers / providers will need to demonstrate their policy & practice in relation to the Welsh Language Standards of the commissioning partners; including providing initial and annual information about their staff skills in welsh language and how they will provide training to promote the welsh language

Tenderers / providers will need to demonstrate how they intend to meet the cultural and linguistic needs of the local populations/s (each County); the tender makes specific needs to understanding of the Welsh language, culture and heritage

**Unintended negative consequences identified:**

**Mitigating actions:**

**A globally responsible Denbighshire**

Overall Impact	
Justification for impact	

**Positive consequences identified:**

**Unintended negative consequences identified:**

**Mitigating actions:**